

Ratings

Voltage: 19V
Current: 8A between ② and ④
2A between ③ and ④

Operating Temperature Range

-25°C ~ 80°C

Materials

- ① Insulator: PBT + 15% GF, black
- ② Sleeve 1: C3603 or C3604 brass, nickel plated
- ③ Sleeve 2: C3603 or C3604 brass, nickel plated
- ④ Spring contact: C5191 phosphor bronze, nickel plated

Electrical Requirements

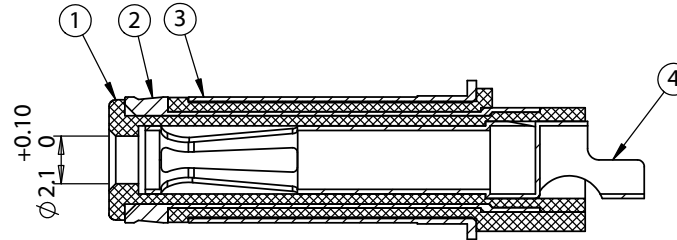
Dielectric strength: 1 min @ 300 Vac
Insulation resistance: 50 MΩ @ 500 Vdc
Contact resistance: 30 mΩ or less

Mechanical Requirements

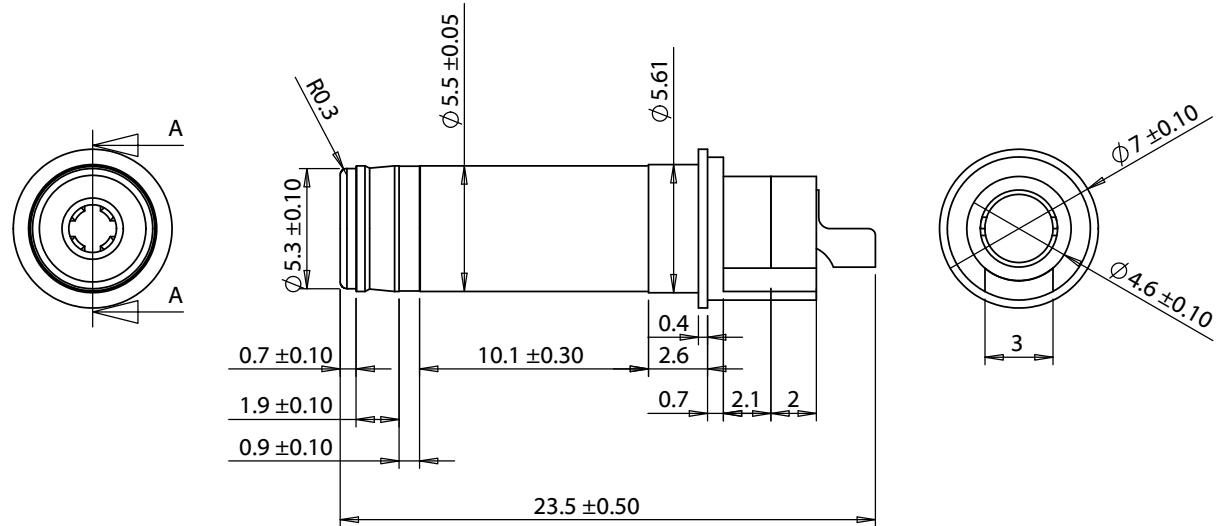
Insertion force: 0.3-3 kgf
Withdrawal force: 0.3-3 kgf
Life cycle: 5000 mating cycles while maintaining 0.3 kgf min.
insertion force, 0.2 kgf min. withdrawal force and less than
100 mΩ contact resistance.

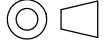
Environmental Requirements

Cold test: -25 ±3 °C for 48 hours without deformation
Heat test: 70 °C, relative humidity 70-85% for 96 hours
without deformation
Humidity test: 40 °C, relative humidity 90-100% for 96 hours
without deformation
Salt spray test: 35 °C, relative humidity 90-95%, 5% NaCl
mist for 24 hrs. Wash parts after test. Maintain mechanical
requirements and a contact resistance of less than 80 mΩ.



SECTION A-A



Revision:	Date:	Description:	Prepared:	Notes:	<div>TENSILITY</div> <div>tel 1.541.323.3228 800 877.670.7118</div> <div>fax 1.541.323.4202 web tensility.com</div>		
A	11/7/18	Initial release	Verified:	RoHS compliant			
			Dimensions are in millimeters.	Function test: no open, no short circuit, no intermittent	Size: Part number:		
			Tolerances:	Description:			
			X: ± 0.3 mm	Connector, dc plug, 5.5x2.1xL23.5 mm, spring contacts, 3 conductors	A 50-00088		
			X.X: ± 0.1 mm		Scale: 3:1		
			X.XX: ± 0.05 mm		 Sheet 1 of 1		