

Materials

Outer shell: C3604 brass, black chrome-plating
Front nut: C3604 brass, black chrome-plating
Insulator: PPS (Polyphenylene sulfide) UL94 V-0, beige
Pin: C38500 brass, 0.2 µm gold-plating, solder cup style
Washer p/n 56-00006: cold rolled steel, nickel-plating
Nut p/n 56-00007: C3604 brass, nickel-plating

Electrical Requirements

Breakdown voltage: 0.85 kV rms (contact to contact), 0.70 kV rms (contact to shell)
Dielectric strength: 1 min @ 500 Vac
Insulation resistance: 10,000 MΩ @ 500 Vdc
Contact resistance: 30 mΩ or less, 5000 cycles

Mechanical Requirements

Insertion force: 1.02 kgf average
Withdrawal force: 0.82 kgf average
Latch force: 18.4 kgf average
Life cycle: 5000 minimum mating cycles at 300 cycles per hour
Shock resistance: 100g, 6 ms
Resistance to vibration: 10-2000 Hz, 15g

Environmental Requirements

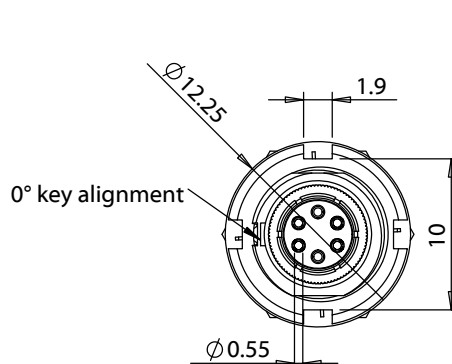
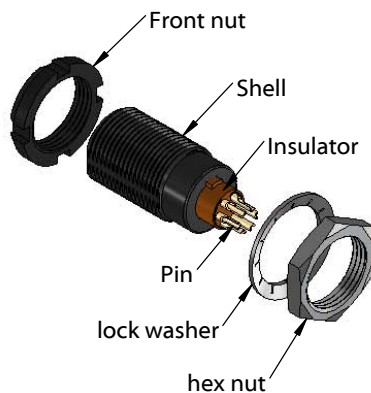
IP50 rating

Assembly info

Wire gauge: 28 AWG max (Ø0.45 mm)

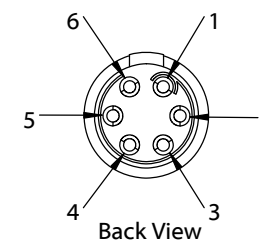
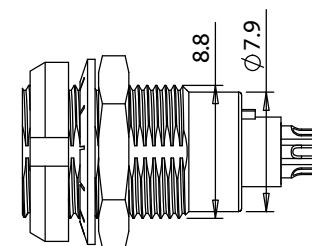
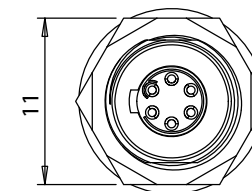
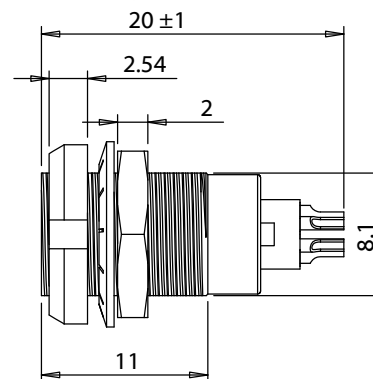
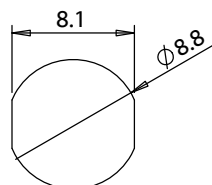
Mating info


Mates with PPL7 series plug (6 pin, 0° key)



Installation Details

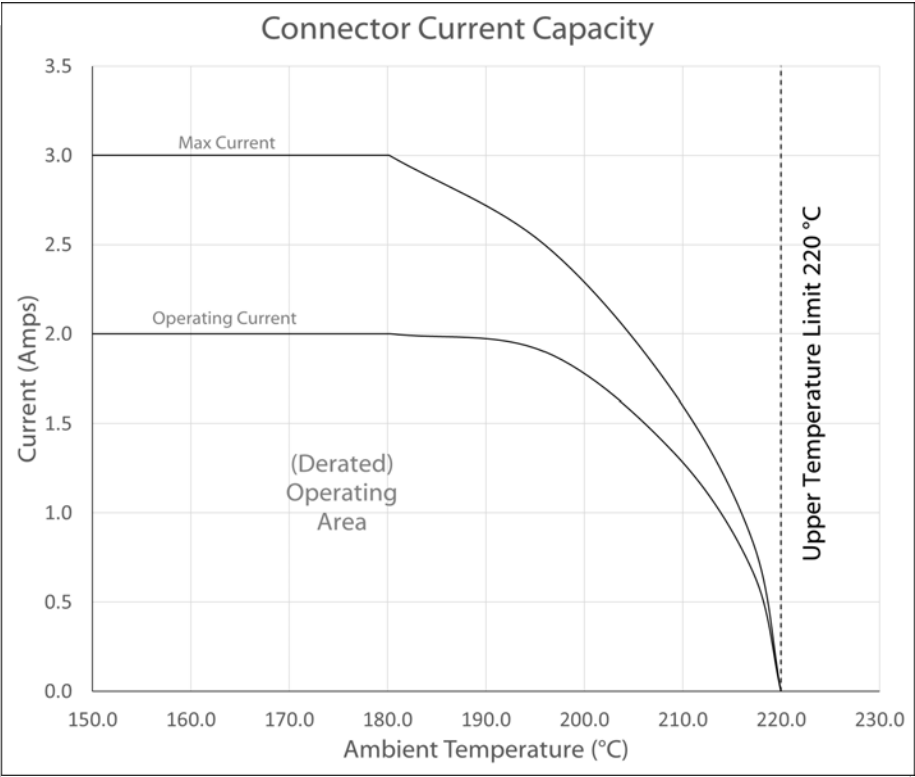
Panel thickness: 5.5 mm max
Panel cutout Ø: 8.8 - 11.75 mm
Connector layout:



Revision:	Date:	Description:	Prepared:	Notes:	<div><h1>TENSILITY</h1><p>tel 1.541.323.3228 800 877.670.7118 fax 1.541.323.4202 web tensility.com</p><div>Size: A Part number: 51-00074</div><div>Scale: 2:1  Sheet 1 of 2</div></div>
A	05/19/2020	Initial Release	Verified:	RoHS compliant Function test: no open, no short circuit, no intermittent	
			Dimensions are in millimeters. Tolerances: X: ± 0.5 mm X.X: ± 0.3 mm X.XX: ± 0.05 mm	Description: Connector, PPL7, 6C, 0° panel socket, front-back mount, 7x20 mm, black chrome, solder	

Ratings
Voltage: 300 V
Current: 2.0 A

Operating Temperature Range
-55 to 220 °C



Testing based on IEC 60512-5-2. Max current curve generated with isolated test article under controlled environmental conditions, and does not take into account external factors such as housings, mating cables, or other circuitry. Operating current curve (derated by 20% of maximum values) accounts for external factors, and manufacturing variation.

Revision:	Date:	Description:	Prepared:	Notes:	<div>TENSILITY</div> <div>tel 1.541.323.3228 800 877.670.7118</div> <div>fax 1.541.323.4202 web tensility.com</div>	
A	05/19/2020	Initial Release	Verified:	RoHS compliant		
			Dimensions are in millimeters. Tolerances: X: ± 0.5 mm X.X: ± 0.3 mm X.XX: ± 0.05 mm	Function test: no open, no short circuit, no intermittent	Size: Part number:	
				Description:	A	51-00074
				Connector, PPL7, 6C, 0° panel socket, front-back mount, 7x20 mm, black chrome, solder	Scale: 2:1	Sheet 2 of 2