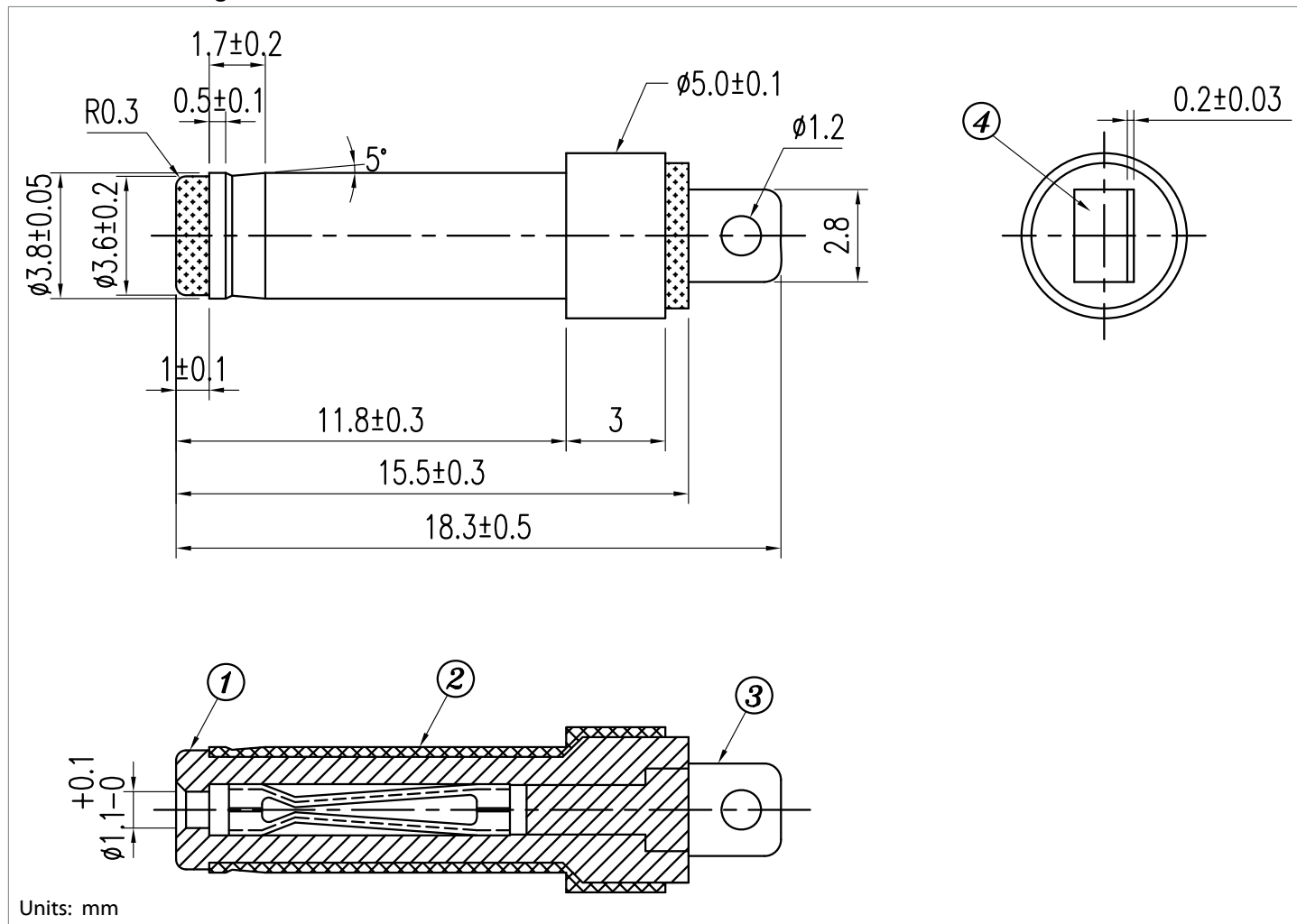


Materials:

1	PBT, black
2	brass C3604, nickel-plated, 2 µm min.
3	phosphor bronze C5191, nickel-plated, 2 µm min.
4	POM, yellow

Notes:

RoHS compliant

Mechanical drawing:

tolerance X: ± 0.5 mm .X: ± 0.3 mm .XX: ± 0.05 mm
applicable unless otherwise indicated in specification or on drawings

Initial

Date

Electrical Requirements:

Dielectric strength	500 Vac for 1 minute without breakdown
Insulation resistance	500 Vdc/ 100 MΩ
Contact resistance	30 mΩ or less between plug and jack
Rated voltage	24 Vdc
Rated current	5 A

Mechanical Requirements:

Insertion force	0.5 ~ 2 kgf
Withdrawal force	0.3 ~ 1.5 kgf
Life cycle	5000 cycle minimum while maintaining: insertion force between 0.4 ~ 2 kgf; withdrawal force between 0.2 ~ 1.5 kgf; contact resistance of 100 mΩ or less between plug and jack

Environmental Requirements:

Damp test	40 °C, humidity 90 - 100 % for 96 hrs then cool to ambient for 2 hours while maintaining 500 Vac for 1 minute; 50 MΩ or less insulation resistance at 500 Vdc; 100 mΩ or less contact resistance
Dry test	70 °C, humidity 70 - 85 % for 96 hrs then cool to ambient for 2 hours while maintaining contact resistance of 100 mΩ or less; 50 MΩ or less insulation resistance at 500 Vdc
Salt spray test	35 ±2 °C, humidity 90 - 95 %, NaCl mist spray for 24 hrs; parts washed and returned to ambient; 80 mΩ max contact resistance

Operating temperature and humidity range:

Temperature	-25 °C ~ 70 °C
Humidity	85 % or less

Revision notes:

Rev	Date	Description
A	3/11/2015	initial release

Prepared:	Verified:

Specification Approval

Spec sign-off verifies that you have reviewed the entire specification, tested a sample of the product, and confirm that it meets your requirements. This specification reflects the part as it will be ordered. Orders will not be processed until the specification pages have been initialed and the approval page has been signed. This specification is confidential and is not to be transmitted without prior approval from Tensility.

Signature _____	Title _____
Name _____	Date _____
Company _____	Branch _____